

OptiCenter® OC07

Clean, efficient and superior application technology



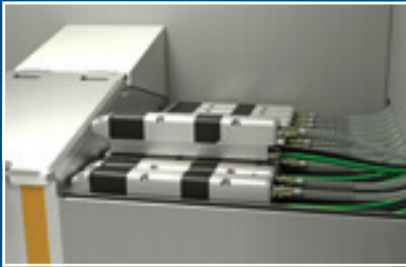
Fastest colour change and stable powder output

The OptiCenter OC07 powder management center combines state-of-the-art OptiSpray application pump technology with automatic fresh powder feed for fast and clean color changes. The system is the basis for constant and reproducible coating results and significant powder savings.

Your global partner for high quality powder coating



Excellent coating results and minimal powder consumption



OptiSpeeder with OptiSpray AP01



Efficient and flexible color changes

The heart of the OptiCenter is the OptiSpeeder powder hopper, which optimally conditions the powder by fluidization. The new OptiSpeeder has a large inclined opening, which allows a quick and easy access and insight into the interior of the powder container.

The short suction distances are designed for an even powder flow and best coating results!

The closed powder circuit is controlled fully automatically and ensures a clean working environment as well as measurably greater efficiency.

The OptiSpeeder is equipped with a powder level detection and automatic fresh powder feed, which guarantee a constantly available powder quantity.

The switching from fresh powder to recovery operation and cleaning mode is fully automatic.



OptiSpeeder powder hopper

Individual cleaning efficiency

With the fully automatic cleaning of the powder hopper and all powder-carrying components, you achieve the highest cleaning efficiency!

The user can apply the cleaning modes individually:

- Quality Mode: cleaning program for contrasting colours and highest cleaning demands
- Fast Mode: quick cleaning program for color changes within the same color spectrum
- Custom Mode: user-specific color change programs

Variable powder level detection

The integrated stepless level control detects the powder level in the powder hopper and shows it on the display at any time, maintaining application consistency perfectly. Even small powder quantities are detected and allow the coating of small production batches.

Constant powder output

Stable coating quality over long periods of time

The OptiSpray application pumps are directly integrated into the OptiSpeeder. The design of the application pump is optimally designed for fast color changes.

The Smart Inline Technology (SIT) and the pump's single-chamber system ensure a linear and extremely precise powder flow. This guarantees reproducible and constant coating results.

The constant powder feed of the OptiSpray increases the transfer efficiency and helps to achieve significant powder savings.

The device is equipped with an automated rinsing function for cleaning the pump, the suction tubes and the gun.



OptiSpray AP01
application pump



OptiStar® 4.0: Ergonomic and powerful

The OptiStar gun control is the key to achieving accurate and reproducible coating results. The control unit is integrated into the control cabinet of the OptiCenter and allows a precise control of the powder application.

- Digital Valve Control (DVC) technology for consistent and reproducible powder powder output
- The Precision Charge Control mode (PCC) adjusts the current flow even in the lowest amperage range (0-10 μ A) with the highest precision, eliminating overcharging of sensitive powder
- Intuitive usage of the display for direct access to all coating parameters: high voltage, spray current, powder output and total air
- 3 standard programs (flat parts, profiles and re-coating)
- 250 customized programs available at any time via the display screen
- Powder output alignment for all automatic guns
- CAN bus technology for horizontal integration into the higher-level plant control system



Trendsetting and intuitive



OptiControl powder management control

Easy operation and programming

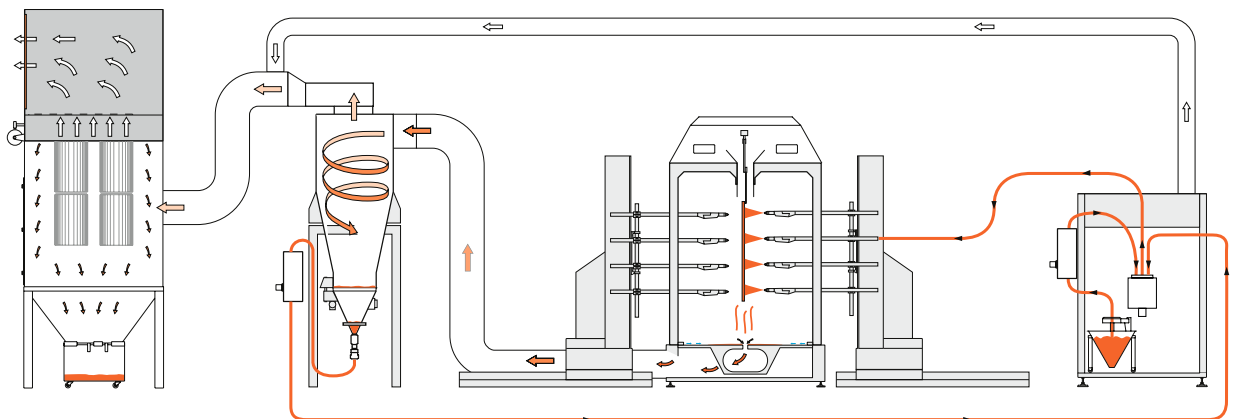
The operation of the OptiCenter is particularly intuitive and takes place via the 7" touch screen of the integrated OptiControl control unit.

The OptiControl control unit has the following highlights:

- Clear user interface: Easy operation of the coating and color change process
- Coating process: Automatic and programmable changeover time from fresh powder to recovery operation
- Minimum Fresh Powder Ratio Control: Quality increase for coating in recovery operation through controlled additional fresh powder supply
- Programmable powder level for standard and small series coating
- Selection of the cleaning programs: Quality Mode for deep cleaning, Fast Mode for quick cleaning and Custom Mode for user-specific color change programs

Closed loop and efficient powder circuit

The powder circuit guarantees a continuous and consistent powder feed with minimal wear and tear on parts. The OptiCenter, application and powder pumps as well as recovery system are all ideally matched to each other and ensure perfect working conditions. With a fresh powder feed and sieving solution, the most demanding quality requirements and expectations can be met.



Flexible design and configuration

Flexible design

The application possibilities of the OptiCenter are extremely diverse. Depending on requirements, it can be supplied as a stand-alone product or as an integrated component of a complete system with gun, axis and booth control.

The OptiCenter has a particularly compact design and the control elements can be arranged flexibly on the right or left side. This results not only in space-saving, but also ergonomically optimal solutions.

Gentle powder recovery

The powder recovery system is based on the proven OptiFeed powder pumps from Gema. These pumps convey the powder gently to the OptiSpeeder. The OptiFeed pumps do not have any moving parts and therefore require only minimum maintenance.



OptiCenter OC07

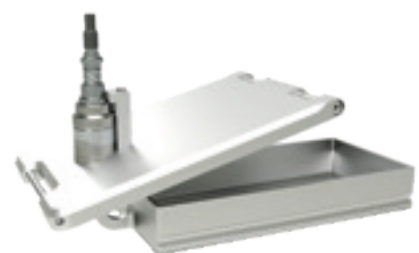


OptiFeed powder pump

A variety of configurations

The OptiCenter can be equipped flexibly according to your individual demands. The equipment variants include the following:

- Ultrasonic sieve insert US07: The free-swinging sieve surface ensures loss-free energy coupling for ultrasonic sieving and enables efficient sieving performance.
- Variants of the internal fresh powder feed:
 - Cone (standard)
 - Vibrating table for powder box
 - Powder Hopper (50l/100l volume)
- External fresh powder supply with OptiFeed FPS16 BigBag



Ultrasonic sieve insert US07





OptiCenter OC07

Excellent Coating Results

- Short suction distances
- Variable powder level detection
- Continuous supply of fresh and recycled powder
- Integrated ultrasonic sieve solution

Quick Color Change

- Closed powder circuit
- Fully-automated cleaning process
- Fully automatic switching from fresh powder to recovery operation

Compact Design

- Electrostatic + Powder Management
- Flexible, versatile configurations

Ergonomic and intuitive Interface

Easy Maintenance

OptiSpeeder

- Closed powder hopper
- Generous access to the powder hopper
- Versions: 24 / 36 integrated application pumps
- Constant powder level

Cleaning

- Automatic cleaning of powder hopper
- Automatic cleaning of the suction tubes, powder hoses and guns
- Automatic cleaning of the fresh powder and recovery pump and hoses

Pump Integration

- Space-saving pump integration for easy access and maintenance
- Short suction distances for fast reaction times when switching guns on/off
- Integrated electronic pump control
- Cover protection
- Dust-free and user-friendly operation
- Completely pre-assembled system, ready for operation



OptiControl

- Programmable changeover time from fresh powder to recovery operation
- Minimum Fresh Powder Ratio Control
- Programmable powder level
- Cleaning programs: Quality, Fast and Custom mode

OptiSpray AP01

- Unique single chamber design
- SIT concept (Smart Inline Technology)
- Automatic wear part diagnostic
- Compact design for a perfect system integration
- Stable application quality over long time
- Up to 15% powder savings
- Automatic cleaning program for color change
- Easy Maintenance

OptiStar 4.0

- Intuitive Interface
- Easy Programming for high voltage, current and powder output
- Accurate and repeatable powder output settings
- PCC (Precise Charge Control) for exact current control below 10 μ A in 0.5 increments!
- CAN-Bus for communication with superior control system
- Robust and rugged design

Gema Switzerland

Your global partner for high quality powder coating

Take advantage of our expertise and experience from more than 50 years of electrostatic powder coating applications. From simple hand coating through to fully automated powder coating, we offer solutions that meet the demands and requirements of customers around the world in a wide range of industrial sectors. A global service network ensures you always get professional support, at any time and any place!

Gema is part of Graco Inc. Our goal is to help our customers to increase their productivity while creating attractive, long-lasting products. Our experts continually set new standards in the surface coating industry.



Gema Switzerland GmbH reserves the right to make technical modifications without notice. Illustrations in brochures may contain special options and do not necessarily correspond to the standard version. EquiFlow, Gema, MagicCompact, MagicControl, MagicCylinder, OptiCenter, OptiFlex, OptiFlex Pro, OptiFlow, OptiGun, OptiSelect, OptiSpeeder, OptiStar, OptiStar All-in-One and PowerBoost are trademarks of Gema Switzerland GmbH.

Gema Switzerland GmbH

Mövenstrasse 17 | 9015 St.Gallen | Switzerland

T +41 71 313 83 00 | F +41 71 313 83 83

www.gemapowdercoating.com

